
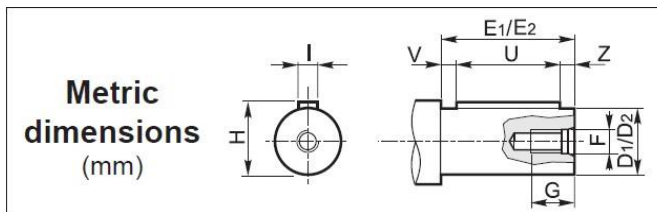




Редуктор, Мотор-редуктор RCV 202A VARMEC

CV RCV	i	$n_1 = 2800 \text{ min}^{-1}$			$n_1 = 1400 \text{ min}^{-1}$			$n_1 = 900 \text{ min}^{-1}$					
		n_2 min^{-1}	Mn_2 Nm	P_1 kW	n_2 min^{-1}	Mn_2 Nm	P_1 kW	n_2 min^{-1}	Mn_2 Nm	P_1 kW	IEC B5	IEC B14	NEMA
202A	3.81	735	44	3.5	367	52	2.1	236	52	1.3	56-63-71-80-90	56-63-71-80-90	56-140
	4.66	601	51	3.3	300	61	2.0	193	61	1.3	56-63-71-80-90	56-63-71-80-90	56-140
	5.49	510	61	3.4	255	73	2	164	73	1.3	56-63-71-80-90	56-63-71-80-90	56-140
	6.46	433	59	2.8	217	70	1.7	139	70	1.1	56-63-71-80-90	56-63-71-80-90	56-140
	7.75	361	60	2.4	181	72	1.4	116	73	0.92	56-63-71-80-90	56-63-71-80-90	56-140
	8.57	327	61	2.2	163	73	1.3	105	73	0.84	56-63-71-80-90	56-63-71-80-90	56-140
	9.92	282	64	2	141	77	1.2	91	77	0.76	56-63-71-80-90	56-63-71-80-90	56-140
	11.67	240	65	1.7	120	78	1	77	78	0.66	56-63-71-80-90	56-63-71-80-90	56-140
	14	200	65	1.4	100	78	0.85	64	78	0.55	56-63-71-80-90	56-63-71-80-90	56-140
	15.48	181	65	1.3	90	78	0.77	58	78	0.49	56-63-71-80-90	56-63-71-80-90	56-140
	18.01	155	81	1.4	78	97	0.82	50	97	0.53	56-63-71-80-90	56-63-71-80-90	56-140
	21.19	132	80	1.2	66	96	0.69	42.5	96	0.44	56-63-71-80-90	56-63-71-80-90	56-140
	25.43	110	88	1.1	55	106	0.64	35.4	106	0.41	56-63-71-80-90	56-63-71-80-90	56-140
	28.13	100	86	0.93	50	103	0.56	32	103	0.36	56-63-71-80-90	56-63-71-80-90	56-140
	31.71	88	89	0.86	44.2	108	0.52	28.4	107	0.33	56-63-71-80-90	56-63-71-80-90	56-140
	37.31	75	90	0.74	37.5	107	0.44	24.1	107	0.28	56-63-71-80-90	56-63-71-80-90	56-140
	44.77	63	89	0.61	31.3	107	0.36	20.1	107	0.23	56-63-71-80-90	56-63-71-80-90	56-140
	49.52	57	87	0.54	28.3	104	0.32	18.2	104	0.21	56-63-71-80-90	56-63-71-80-90	56-140
	54.2	52	86	0.48	25.8	103	0.29	16.6	103	0.19	56-63-71-80-90	56-63-71-80-90	56-140
	60.43	46.3	75	0.38	23.2	90	0.23	14.9	90	0.15	56-63-71-80-90	56-63-71-80-90	56-140

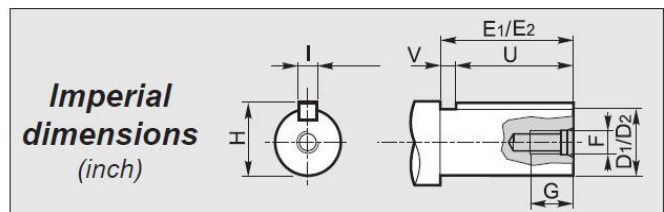


1 Albero entrata / Input shaft / Antriebswelle
Arbre d'entrée / Eje de entrada / Eixo de entrada

D_1 h6	E_1	F	G	H	I	U	V	Z
(16)*	40	M6	15	18	5	25	10	5
19	40	M6	15	21.5	6	30	5	5

2 Albero uscita / Output shaft / Abtriebswelle
Arbre de sortie / Eje de salida / Eixo de saída

D_2 h6	E_2	F	G	H	I	U	V	Z
14	30	M5	12	16	5	20	5	5
16	40	M6	16	18	5	30	5	5
19	40	M6	16	21.5	6	30	5	5
20	40	M8	18	22.5	6	30	5	5
24	40	M8	18	27	8	30	5	5
25	50	M8	18	28	8	40	5	5
28	60	M8	18	31	8	50	5	5
30	60	M10	22	33	8	50	5	5

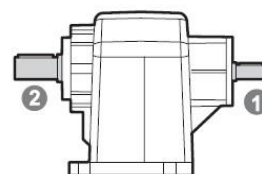


1 Albero entrata / Input shaft / Antriebswelle
Arbre d'entrée / Eje de entrada / Eixo de entrada

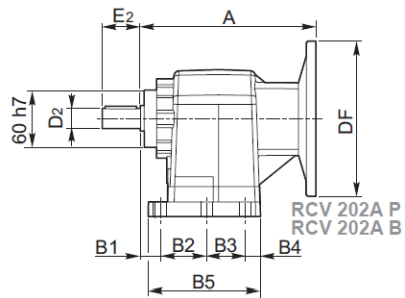
D_1	E_1	F	G	H	I	U	V
0.750	1.575	5/16-18	0.709	0.832	0.187	1.000	0.575

2 Albero uscita / Output shaft / Abtriebswelle
Arbre de sortie / Eje de salida / Eixo de saída

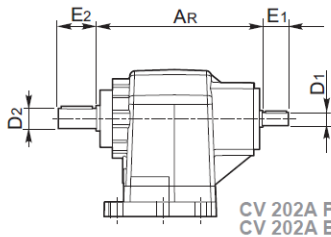
D_2	E_2	F	G	H	I	U	V
0.750	1.575	5/16-18	0.708	0.832	0.187	1.000	0.575



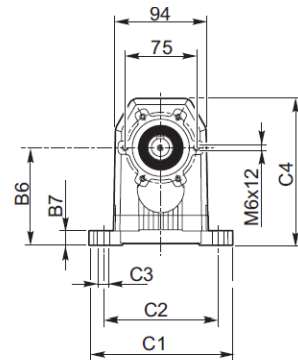
P - B



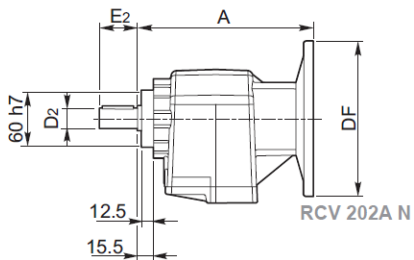
RCV 202A P
RCV 202A B



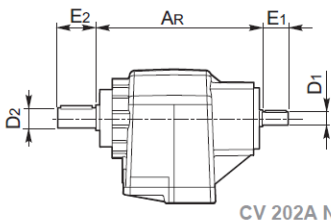
CV 202A P
CV 202A B



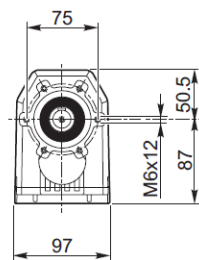
N



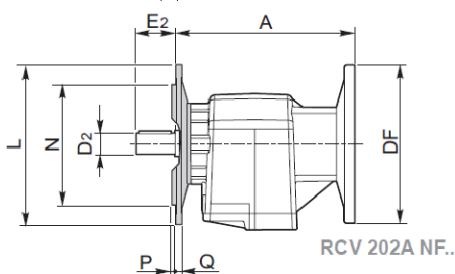
RCV 202A N



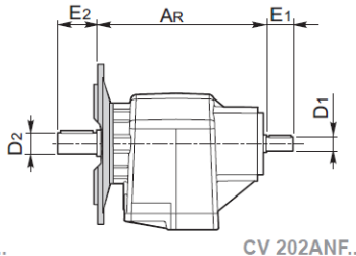
CV 202A N



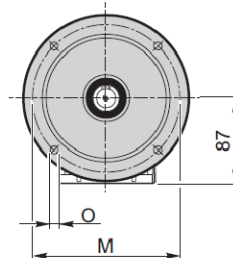
NF



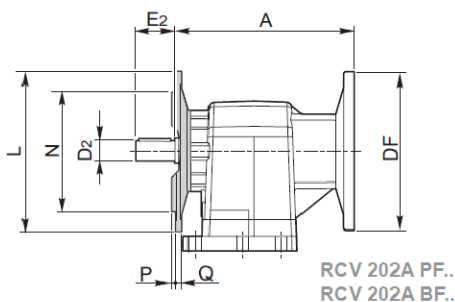
RCV 202A NF..



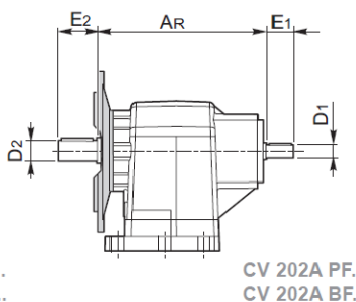
CV 202ANF..



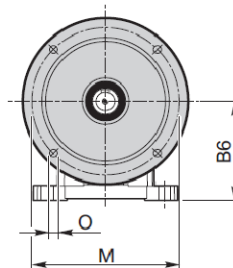
**PF
BF**



RCV 202A PF..
RCV 202A BF..



CV 202A PF..
CV 202A BF..



RCV - CV	B1	B2	B3	B4	B5	B6	B7	C1	C2	C3	C4
202A P	18	60	30	14.5	116.5	100	15	150	130	11	150.5
202A B	18	50	37	16	113.5	85	15	130	110	9	135.5

RCV CV	RCV						CV	
	IEC	DF		A	NEMA	DF	A	AR
(B5)		(B14)						
202A	56	120	80	160	56	165.1	188	173 (156.8)*
	63	140	90		140	165.1	188	
	71	160	105	179.5				
	80	200	120					
	90	200	140					

	L	M	N h8	O	P	Q
NF200- PF200	200	165	130	11.5	3.5	12
NF160- PF160 - BF160	160	130	110	9.5	3	12
NF140- PF140 - BF140	140	115	95	9.5	3	12
NF120- PF120 - BF120	120	100	80	9	3	12

(*) Consultare il nostro servizio tecnico / Please consult our technical service department
 Sie bitte Rücksprache mit unserem technischen Büro / Veuillez nous consulter
 Consultar nuestro servicio técnico / Consulta o nosso serviço técnico